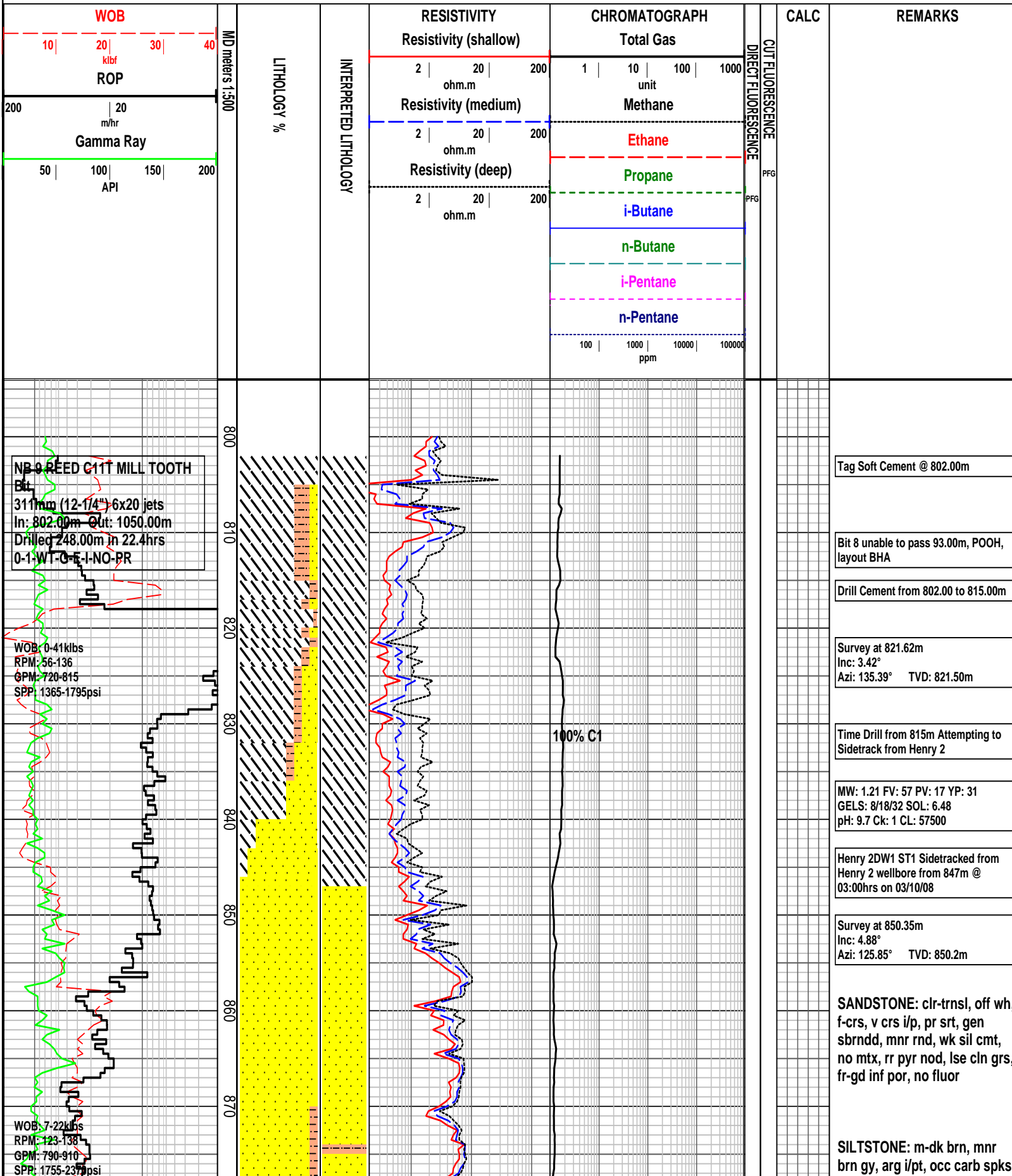


**HENRY 2DW1 ST1 FORMATION EVALUATION LOG**



Tag Soft Cement @ 802.00m

Bit 8 unable to pass 93.00m, POOH, layout BHA

Drill Cement from 802.00 to 815.00m

Survey at 821.62m  
Inc: 3.42°  
Azi: 135.39° TVD: 821.50m

Time Drill from 815m Attempting to Sidetrack from Henry 2

MW: 1.21 FV: 57 PV: 17 YP: 31  
GELS: 8/18/32 SOL: 6.48  
pH: 9.7 Ck: 1 CL: 57500

Henry 2DW1 ST1 Sidetracked from Henry 2 wellbore from 847m @ 03:00hrs on 03/10/08

Survey at 850.35m  
Inc: 4.88°  
Azi: 125.85° TVD: 850.2m

**SANDSTONE:** clr-trnsl, off wh, f-crs, v crs i/p, pr srt, gen sbrndd, mnr rnd, wk sil cmt, no mtx, rr pyr nod, lse cln grs, fr-gd inf por, no fluor

**SILTSTONE:** m-dk brn, mnr brn gy, arg i/pt, occ carb spks, frm disp, shly, amor

Survey at 878.21m  
Inc: 6.34°  
Azi: 127.70° TVD: 877.90m

SANDSTONE: clr-trsl, off wh, m-v crs, pr srt, sbang-dom sbrndd, wk sil cmt, no mtx, mnr pyr nod, lse cln grs, fr-gd inf por, no fluor

Survey at 909.59m  
Inc: 7.84°  
Azi: 131.90° TVD: 909.10m

SANDSTONE: pl gy-off wh, clr-trsl, crs-v crs, mod srt, sbang-sbrndd, mnr rndd, wk sil cmt, no mtx, mnr pyr nod, lse cln grs, fr-gd inf por, no fluor

Survey at 937.25m  
Inc: 10.04°  
Azi: 134.30° TVD: 936.40m

SANDSTONE: clr-trsl, pl gy i/p, f-crs, occ v crs, pr srt, sbang-dom sbrndd, rndd i/p, wk sil cmt, mnr pl brn arg mtx, mnr pyr nod, tr lit, lse cln grs, fr-gd inf por, no fluor

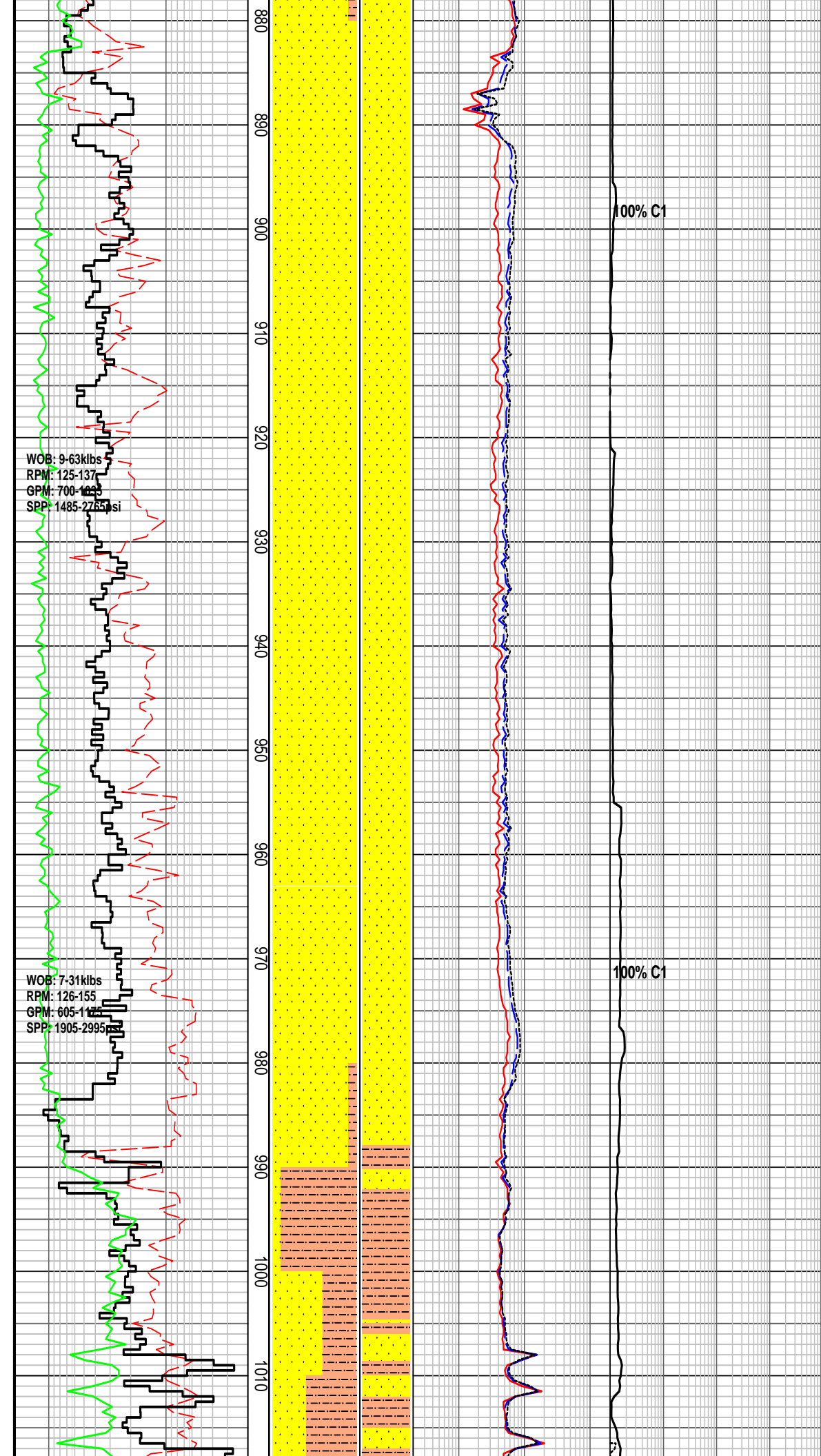
Survey at 965.21m  
Inc: 13.00°  
Azi: 131.43° TVD: 963.80m

SANDSTONE: clr-trsl, f-dom m, crs-v crs i/p, mod srt, sbang-sbrndd, wk sil cmt, no mtr, tr liths, lse cln grs, fr-gd inf por, no fluor

Survey at 996.53m  
Inc: 15.29°  
Azi: 121.48° TVD: 994.10m

SILTSTONE: m-dom dk brn, arg, mnr carb spks, disp v sft, amor, mnr sblky

SANDSTONE: clr, trsl, lt gy, fn-crs gr, pr srt, sbang-pred sbrndd, wk sil cmt, no mtr, tr arg liths, mod lse, cln grs



WOB: 3-32kibs  
RPM: 33-155  
GPM: 650-995  
SPP: 1450-3030psi

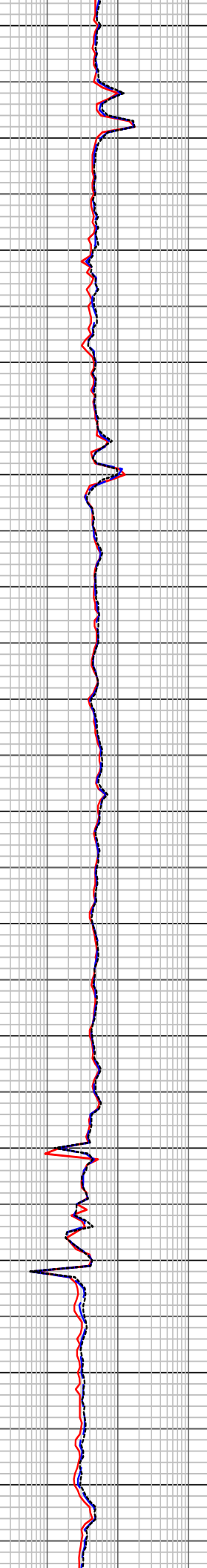
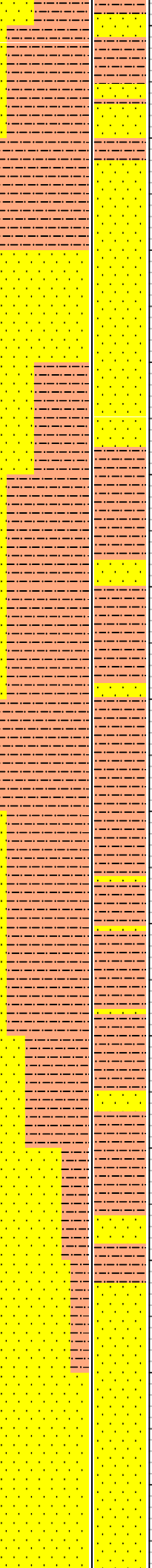
04/19/2008

**NB 10 REEF RSX616M-A16 PDC**  
Bit  
311mm (12-1/4") 3x15 3x16 jets  
In: 1050.00m Out: xxxx.xxm  
Drilled xxx.xxm in xx.xhrs  
X-X-XX-X-X-XX-XX

WOB: 7-16kibs  
RPM: 167-209  
GPM: 953-1030  
SPP: 2364-2711psi

WOB: 4-15kibs  
RPM: 172-206  
GPM: 841-1080  
SPP: 1923-2370psi

1020  
1030  
1040  
1050  
1060  
1070  
1080  
1090  
1100  
1110  
1120  
1130  
1140  
1150



100% C1

100% C1

org liths, pred lse, cin qtz grs, fr-gd inf por, no fluor

Survey at 1026.43m  
Inc: 15.21°  
Azi: 119.39° TVD: 1023.00m

**SILTSTONE:** m brn, m dk brn, arg, mnr carb spks, v sft & disp, amor, mnr sblky

**SANDSTONE:** clr, trnsl, lt gy, fn-crs gr, pr srt, sbang-pred sbrndd, wk sil cmt, no mtrx, tr org liths, pred lse, cin qtz grs, fr-gd inf por, no fluor

MW: 1.25 FV: 82 PV: 29 YP: 48  
GELS: 11/23/35 SOL: 7.65  
pH: 9.2 Ck: 1 CL: 63000

**SILTSTONE:** m brn, m dk brn, arg, mnr carb spks, sft & disp, amor, mnr sblky

Survey at 1083.00m  
Inc: 16.35°  
Azi: 122.48° TVD: 1077.30m

**SILTSTONE:** m-dk brn, arg, tr carb spks, sft & disp, amor, mnr sblky

Survey at 1114.21m  
Inc: 17.07°  
Azi: 121.75° TVD: 1107.20m

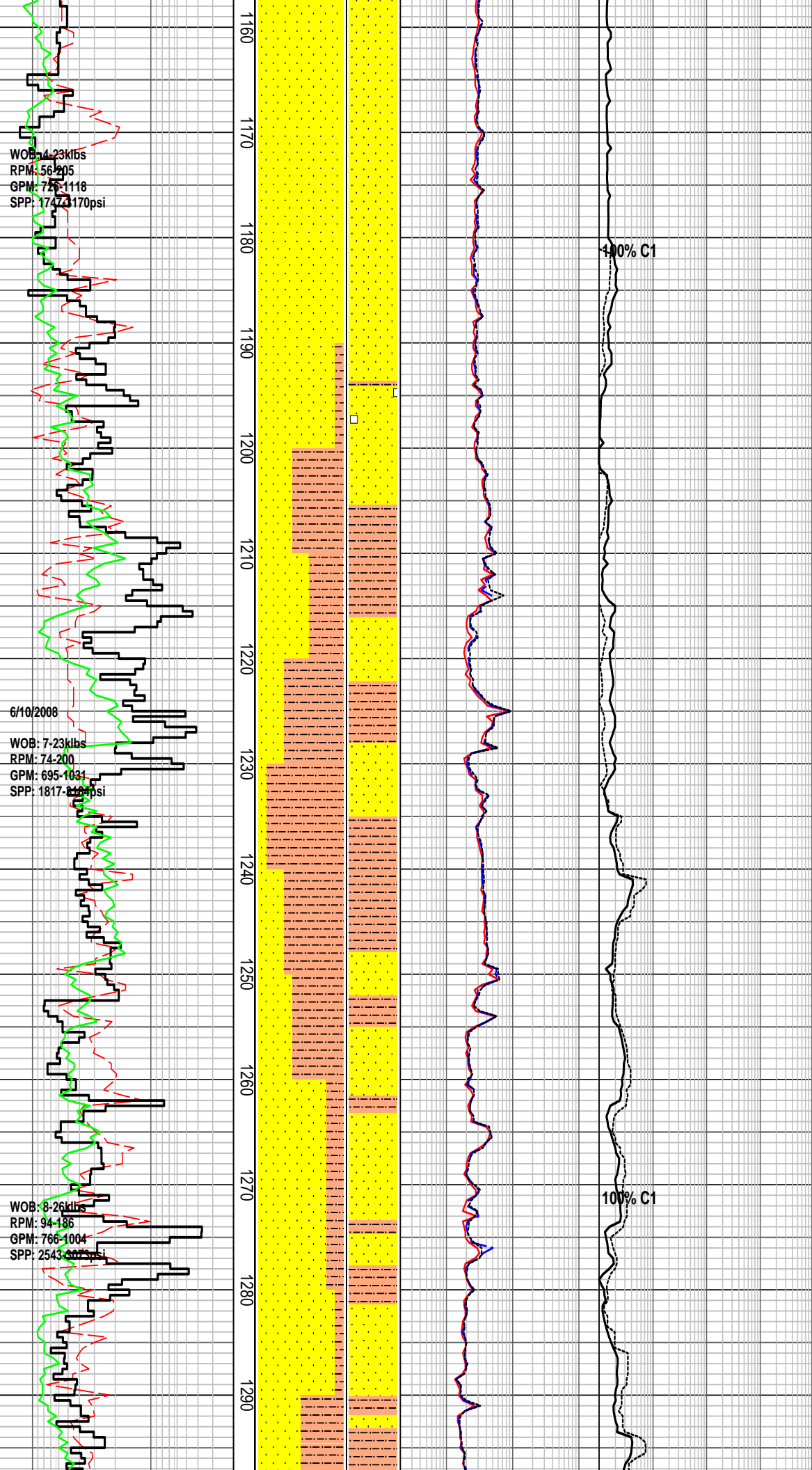
**SILTSTONE:** m brn, m dk brn, arg, mnr carb spks, sft-frm, disp i/p, sblky

1134-1162m Depth Tracking by Draworks Sensor

**SANDSTONE:** lt brnsh gy, off wh, lt gy, grnsh gy, v f-f gr, tr m, mod wl srt, sbang-sbrnd, abd lt brnsh gy arg mtrx, mnr f gr glauc, tr nod pyr, tr carb flks, fri f gr aggs, v pr vis por, no fluor

Survey at 1142.54m  
Inc: 18.03°  
Azi: 121.60° TVD: 1134.20m

**SANDSTONE:** trnsl, clr, lt gy,



WOB: 4-23klbs  
 RPM: 56-205  
 GPM: 72-1118  
 SPP: 174-1170psi

6/10/2008  
 WOB: 7-23klbs  
 RPM: 74-200  
 GPM: 695-1034  
 SPP: 1817-816psi

WOB: 8-26klbs  
 RPM: 94-186  
 GPM: 766-1004  
 SPP: 2543-807psi

100% C1

100% C1

f-pred m-v crs, sbrnd, pr-fr srt, pred lse cln qtz grs, gd inf por, no fluor

**SANDSTONE:** trnsl, clr, wh, lt gy, f-v crs, pred m gr, sbang-pred sbrndd, pr srt, tr off wh arg mtrx, tr glauc, tr yel Fe stn, tr rd liths, tr carb frags, pred lse cln qtz grs, gd inf por, no fluor

Survey at 1198.96m  
 Inc: 18.96°  
 Azi: 120.96° TVD: 1187.70m

**SANDSTONE:** lt brn, lt brnsh gy, off wh, v f-f gr, tr m, mod wl srt, sbang-sbrndd, abd lt brnsh gy arg mtrx, mnf f gr glauc, tr nod pyr, tr carb frags, fri f gr aggs, v pr vis por, no fluor

**SILTSTONE:** m brn gy, m gy, arg, v f aren i/p, tr glauc, tr nod pyr, tr liths, sft-frm, blkly-sblkly

MW: 1.36 FV: 82 PV: 34 YP: 53  
 GELS: 11/19/27 SOL: 11.22  
 pH: 9.0 Ck: 1 CL: 63000

Survey at 1224.66m  
 Inc: 20.37°  
 Azi: 121.46° TVD: 1211.9m

**SILTSTONE:** pl-occ m brn gy, arg, occ carb spks & frags, v sft-disp, amor, sblkly i/p

**SANDSTONE:** clr-trnsl, off wh, m-crs, f i/p, pr srt, sbang-sbrndd, wk sil cmt, occ-com off wh arg mtrx, occ carb spks, lse, fri, v pr vis por, pr inf por, no fluor

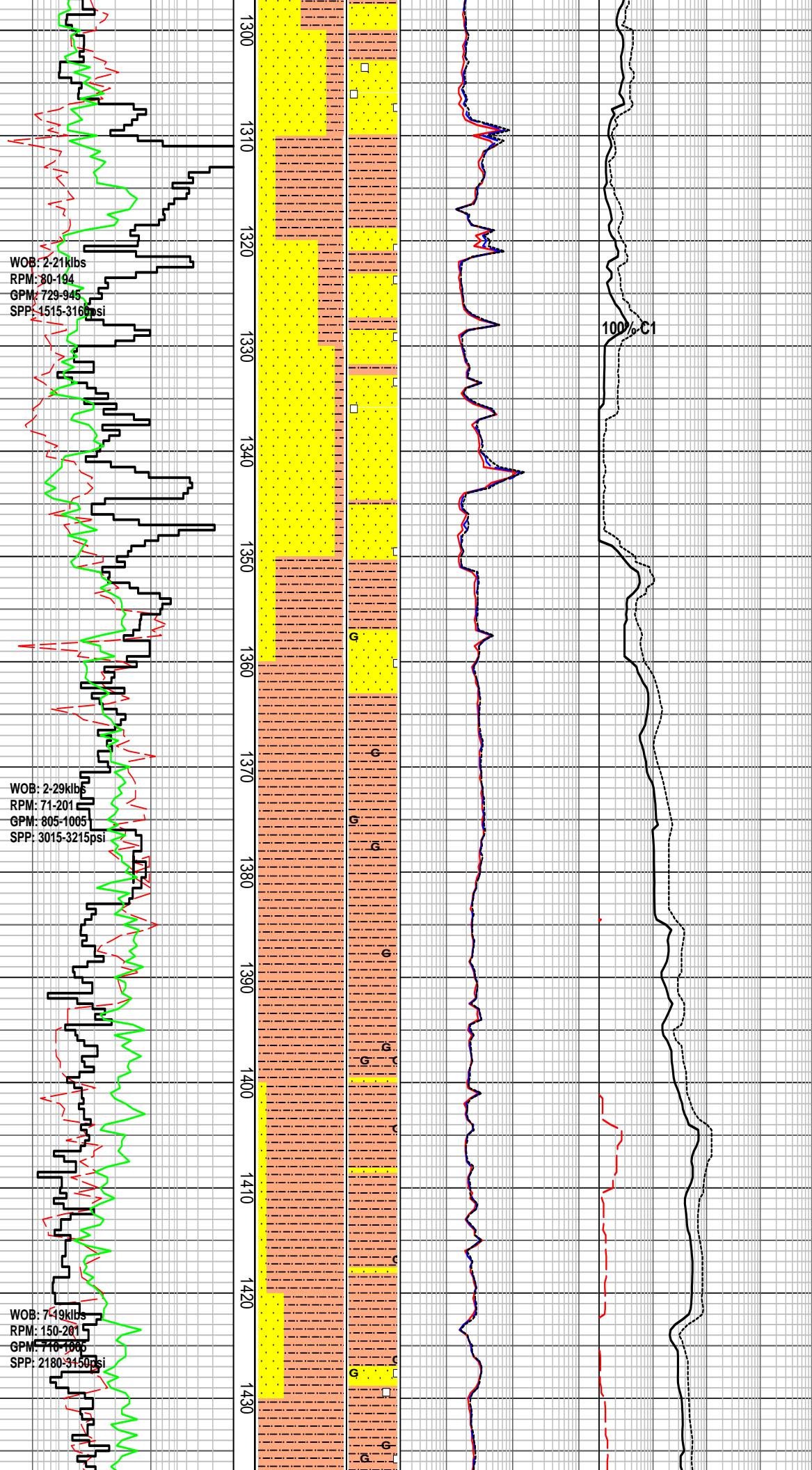
**SILTSTONE:** pl brn-brn gy, m brn gy i/pt, arg, mnf carb spks, rr glauc grs, v sft-disp, amor, rr sbky

Survey at 1255.22m  
 Inc: 22.11°  
 Azi: 123.50° TVD: 1240.4m

**SANDSTONE:** clr-trnsl, mnf pl gy, m-crs, occ v crs, pr srt, sbang-sbrndd, ang i/p, wk sil cmt, rr off wh arg mtrx, occ pyr nod, gen lse cln grs, mnf fri, pr vis por, fr inf por, no fluor

Survey at 1282.52m  
 Inc: 24.01°  
 Azi: 125.50° TVD: 1265.5m





**SILTSTONE:** pl gy-brn gy, arg, occ carb spks, rr glauc grs, v sft-disp, amor, rr sblky

Survey at 1313.59m  
Inc: 25.77°  
Azi: 126.35° TVD: 1293.7m

**SANDSTONE:** clr-trnsl, off wh, f-m, rr crs, mod srt, sbang-sbrnrd, wk sil cmt, occ off wh arg mtrx, occ-com pyr nod, lse, mnr fri, v pr vis por, pr inf por, no fluor

Survey at 1343.38m  
Inc: 27.73°  
Azi: 125.39° TVD: 1320.30m

**SANDSTONE:** clr-trnsl, off wh, f-occ m, rr crs, mod srt, sbang-sbrnrd, wk sil cmt, occ off wh arg mtrx, rr pyr nod, lse, mnr fri, v pr vis por, pr inf por, no fluor

Survey at 1372.41m  
Inc: 30.44°  
Azi: 123.63° TVD: 1345.70m

**SILTSTONE:** lt-m gy, lt-m brnsh gy, lt grnsh gy, arg, tr carb flks, tr glauc, tr dissem pyr, sft, disp, occ frm, sblky

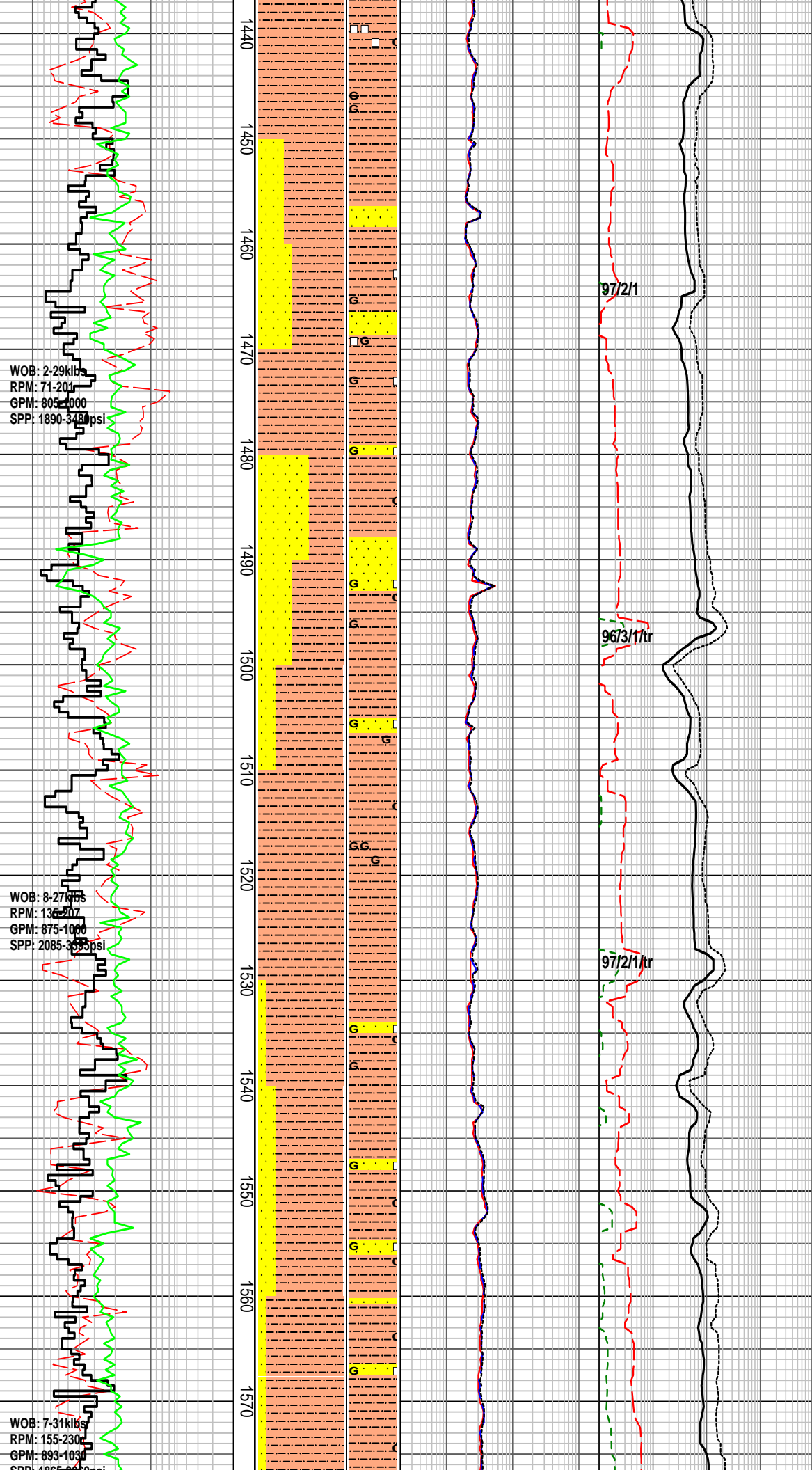
Survey at 1400.56m  
Inc: 32.99°  
Azi: 122.92° TVD: 1369.60m

**SILTSTONE:** m brn, lt-m grnsh brn, brn gy, arg, abd glauc, rr carb spks, sft-frm, blk

**SANDSTONE:** trnsl, clr, off wh, grnsh gy, f-m gr, mod srt, sbrnrd, mnr lt gy arg mtrx, mnr glauc, rr nod pyr, lse i/p, pr-fr inf por, no fluor

Survey at 1393.70m  
Inc: 35.61°  
Azi: 121.93° TVD: 1393.70m

**SILTSTONE:** m brn, lt-m grnsh



WOB: 2-29klb  
 RPM: 71-201  
 GPM: 805-1000  
 SPP: 1890-3480psi

WOB: 8-27klb  
 RPM: 135-207  
 GPM: 875-1000  
 SPP: 2085-3035psi

WOB: 7-31klb  
 RPM: 155-230  
 GPM: 893-1030  
 SPP: 1890-3480psi

brn, brn gy, arg, rr nod pyr,  
 mnr glauc, rr carb spks,  
 sft frm, blk

**SANDSTONE:** trnsl, clr, off wh,  
 grnsh gy, f-m gr, tr crs, mod  
 srt, sbrndd, mnr lt gy arg mtrx,  
 mnr glauc, rr nod pyr, lse i/p,  
 pr-fr inf por, no fluor

Survey at 1459.39m  
 Inc: 38.28°  
 Azi: 120.99° TVD: 1417.40m

**SILTSTONE:** m brnsh gy, v f  
 aren, rr f gr glauc, mnr nod  
 pyr, tr carb spks, sft frm, blk

**SANDSTONE:** trnsl, clr, off wh,  
 lt gy, grnsh gy, f-crs gr, pr srt,  
 sbang-sbrndd, com brnsh gy  
 arg mtrx in f gr aggs, lse m-crs  
 grs, pr-fr inf por, no fluor

**SILTSTONE:** lt-m brn, brnsh  
 gy, arg, rr glauc, rr carb spks,  
 sft frm, blk

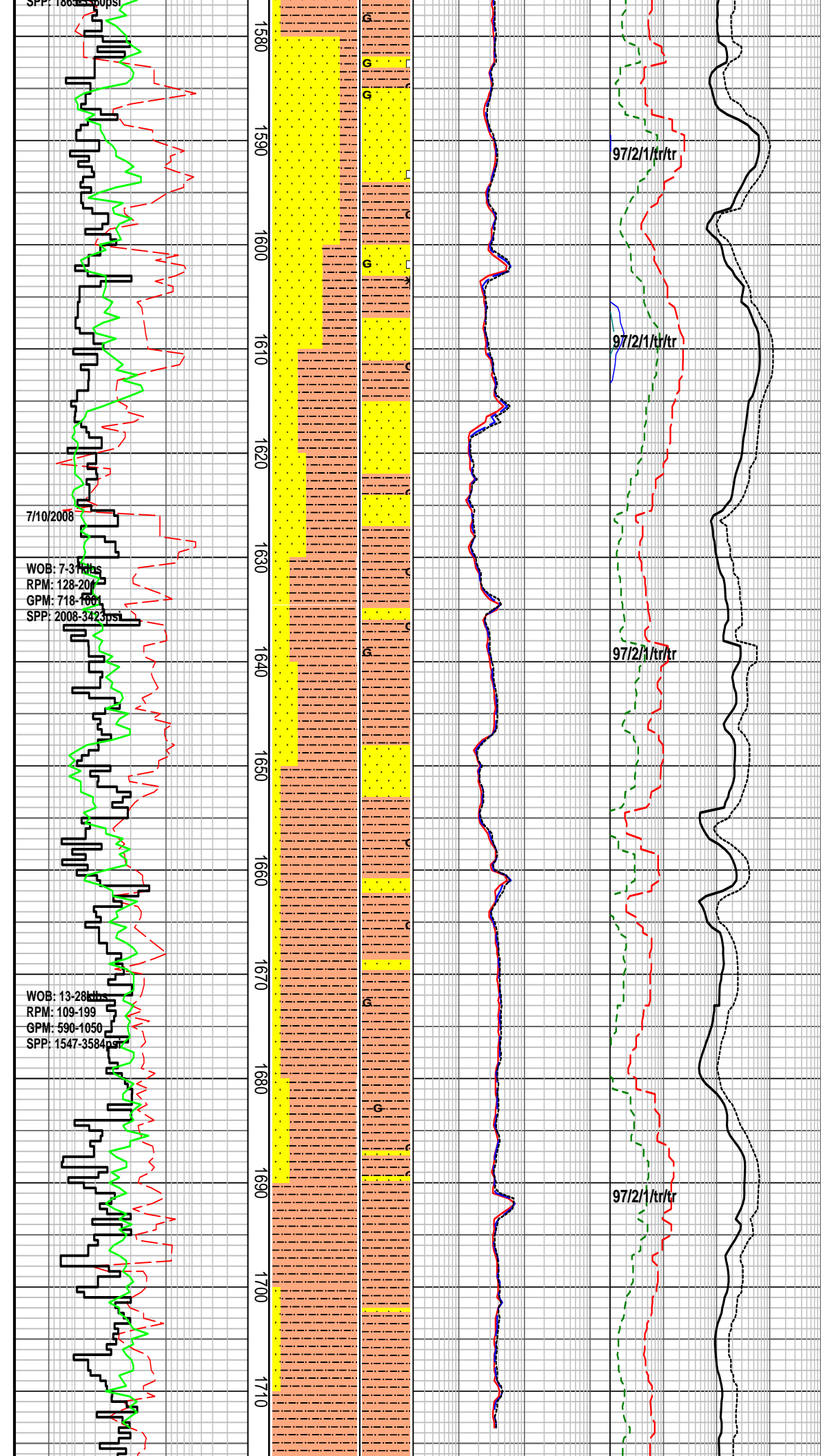
Survey at 1517.02m  
 Inc: 43.20°  
 Azi: 120.19° TVD: 1461.00m

**SILTSTONE:** lt-m brn, brnsh  
 gy, arg, rr glauc, rr carb spks,  
 sft frm, blk

Survey at 1546.81m  
 Inc: 45.86°  
 Azi: 121.16° TVD: 1482.30m

**SANDSTONE:** trnsl, clr, off wh,  
 lt gy, f-m gr, fr srt,  
 sbang-sbrndd, com brnsh gy  
 arg mtrx, rr glauc, fri aggs, pr  
 inf por, no fluor

Survey at 1575.26m



Inc: 47.86°  
 Azi: 121.84° TVD: 1501.70m

**SANDSTONE:** trnsl, clr, off wh, lt gy, f-m gr, fr srt, sbang-sbrndd, com brnsh gy arg mtrx, rr glauc, fri aggs, pr inf por, no fluor

Survey at 1604.83m  
 Inc: 49.87°  
 Azi: 120.74° TVD: 1521.2m

MW: 1.38 FV: 77 PV: 39 YP: 58  
 GELS: 12/25/30 SOL: 12.37  
 pH: 8.4 Ck: 0.5 CL: 56000

**SILTSTONE:** pl gy, pl-m brn gy, arg, mnr glauc grs, occ carb spks, v sft-disp, amor, mnr sbiky

Survey at 1631.03m  
 Inc: 51.38°  
 Azi: 119.97° TVD: 1537.8m

**SANDSTONE:** clr-trnsl, off wh, f, occ v f-f, wl srt, sbang-sbrndd, wk calc cmt, occ off wh arg mtrx, mnr liths, gen lse cln grs, mnr fri, pr-v pr vis por, pr inf por, no fluor

Survey at 1659.42m  
 Inc: 52.99°  
 Azi: 120.24° TVD: 1555.2m

**SILTSTONE:** pl brn, m brn i/p, arg, rr glauc grs, occ-com carb spks, rr micmic, v sft-disp, amor, mnr sbiky

Survey at 1687.79m  
 Inc: 54.14°  
 Azi: 121.36° TVD: 1572.1m

**SANDSTONE:** off wh, v f, wl srt, sbang-sbrndd, wk calc cmt, com off wh arg mtrx, mnr carb spks, fri, v pr vis por, no fluor

WOB: 16-31klbs  
RPM: 89-196  
GPM: 732-1001  
SPP: 2277-3993psi

WOB: 8-32klbs  
RPM: 100-215  
GPM: 712-964  
SPP: 1980-3633psi

WOB: 15-33klbs  
RPM: 150-199  
GPM: 805-968  
SPP: 2643-3620psi

1720  
1730  
1740  
1750  
1760  
1770  
1780  
1790  
1800  
1810  
1820  
1830  
1840  
1850

96/3/1/tr/tr  
CO2: 70ppm

CO2: 600ppm

96/3/1

CO2: 710ppm

Survey at 1716.29m  
Inc: 55.94°  
Azi: 121.40° TVD: 1588.4m

SILTSTONE: m-dk brn, occ pl  
brn, com arg, occ mn carb  
spks, v sft-disp, frm-mod hd  
i/p, amor, sblky

Survey at 1744.93m  
Inc: 57.72°  
Azi: 121.05° TVD: 1604.1m

SILTSTONE: m-dk brn, com  
arg, occ carb spks, v sft-disp,  
occ frm-mod hd, amor, mn  
sblky

Survey at 1773.21m  
Inc: 59.89°  
Azi: 120.16° TVD: 1618.7m

SILTSTONE: pl-m brn, mn dk  
brn, com arg, mn carb spks, v  
sft-disp, occ frm, amor, sblky

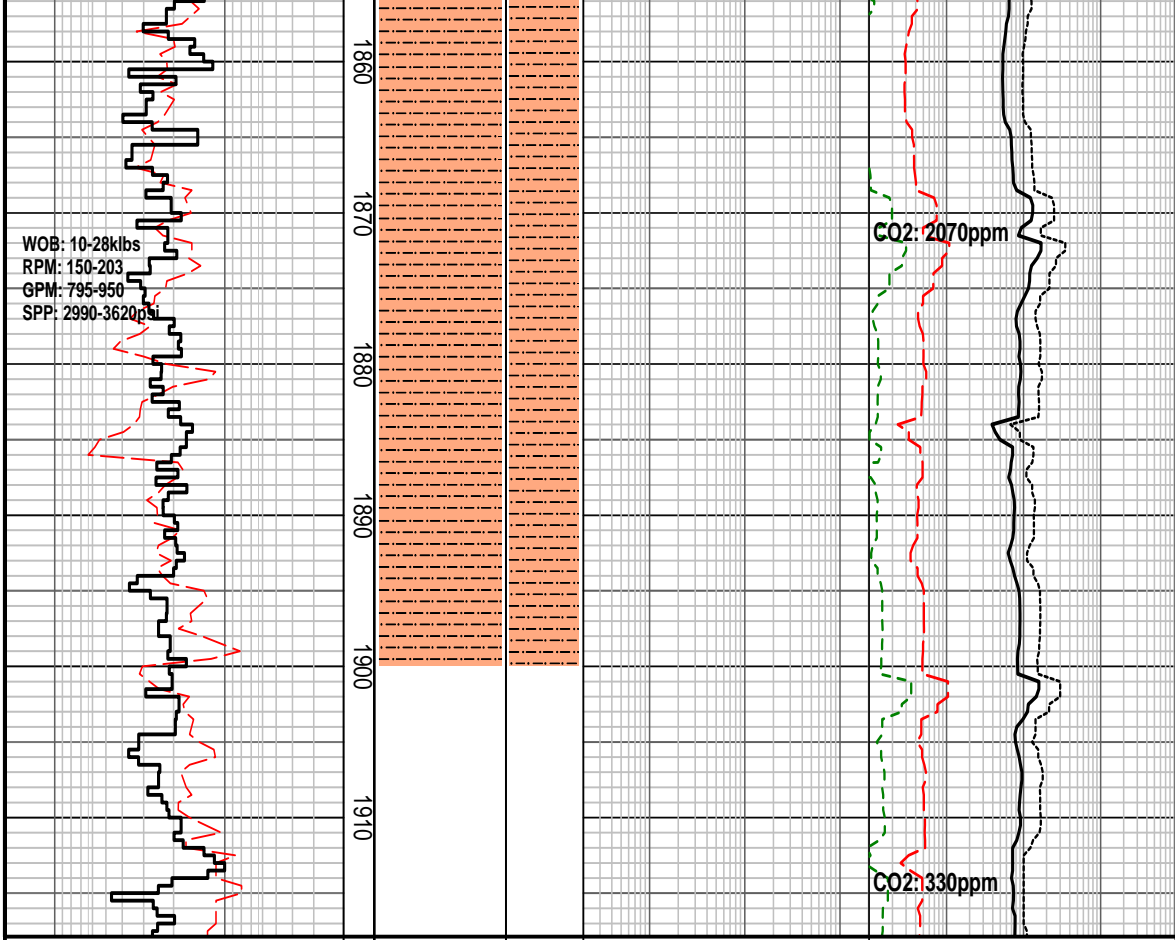
Survey at 1804.01m  
Inc: 62.37°  
Azi: 120.04° TVD: 1633.6m

SILTSTONE: pl-m brn, com  
arg, rr aren, mn carb spks,  
mn glauc grs, v sft-disp, occ  
frm, amor, sblky

Survey at 1832.44m  
Inc: 64.57°  
Azi: 120.07° TVD: 1646.3m

SILTSTONE: pl-occ m brn,  
com arg, mn carb spks, rr  
glauc grs, v sft-disp, occ frm,  
amor, sblky





Survey at 1861.47m  
 Inc: 67.09°  
 Azi: 120.46° TVD: 1658.20m

SILTSTONE: m brnsh gy, m-dk gy, arg with cly washing from spls, tr LST frags, mnr f carb spks, tr liths, sft & disp, amor, blkly

Survey at 1891.65m  
 Inc: 69.46°  
 Azi: 120.95° TVD: 1669.30m

**HENRY 2DW1 ST1 FORMATION EVALUATION LOG**

WOB		MD meters 1:500	LITHOLOGY %	INTERPRETED LITHOLOGY	RESISTIVITY			CHROMATOGRAPH				CUT FLUORESCENCE	CALC	REMARKS
10	20				30	40	2	20	200	1	10			
ROP					Resistivity (shallow)	ohm.m		Total Gas				DIRECT FLUORESCENCE		
Gamma Ray					Resistivity (medium)	ohm.m		Methane					PFG	
API					Resistivity (deep)	ohm.m		Ethane				PFG		
								Propane						
								i-Butane						
								n-Butane						
								i-Pentane						
								n-Pentane						
								ppm						